

# **Attachment 1 - Landfill Construction and Design**

# EMERY COUNTY

Emery County  
 P.O. Box 889  
 Castle Dale, Utah  
 (435) 381-5450

## CONSULTANTS



2702 South 1030 West, Suite 10  
 Salt Lake City, Utah 84119  
 (801)270-9400 Fax: (801)270-9401

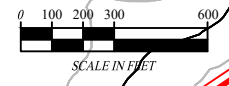
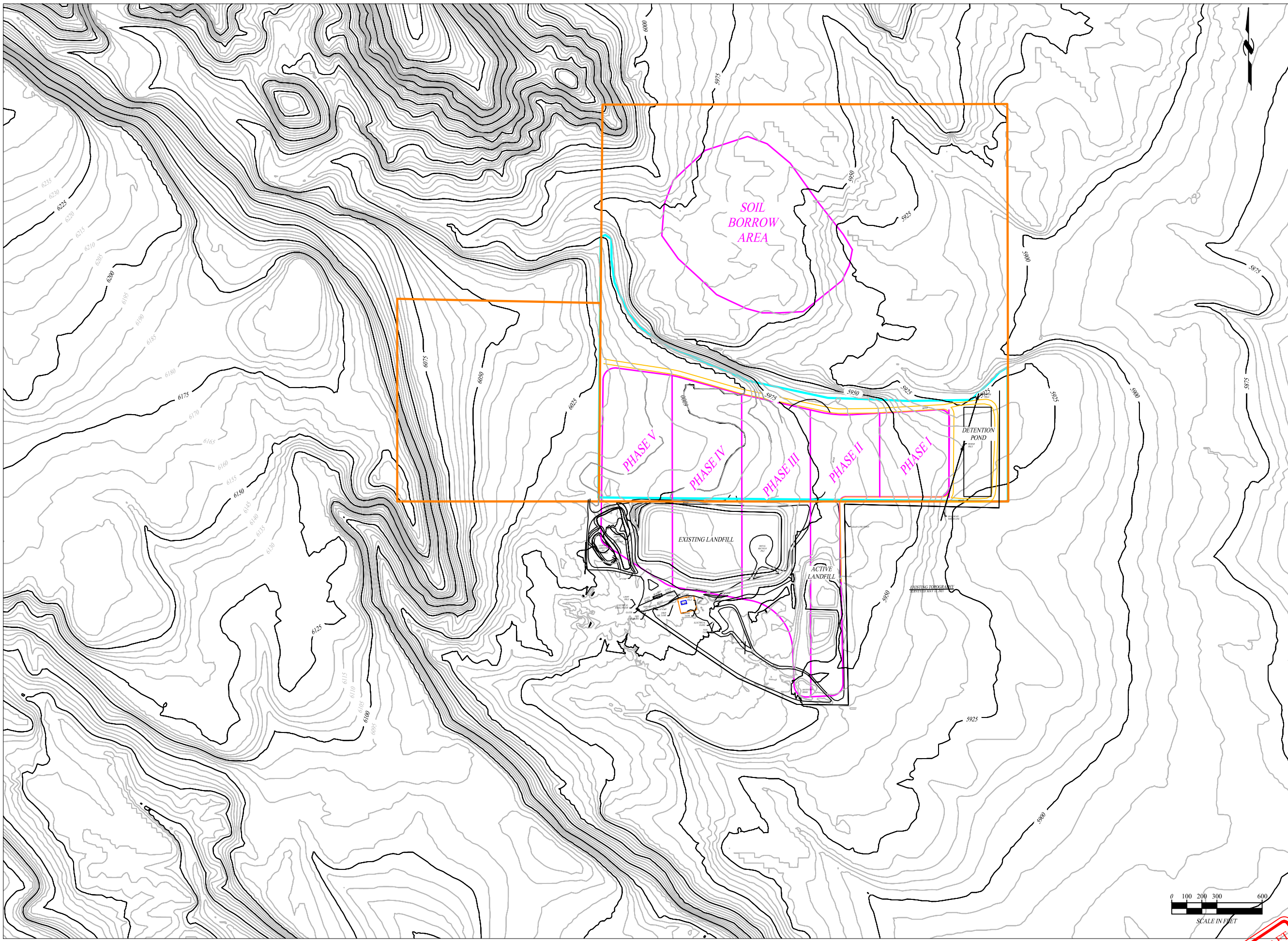
- EMERY COUNTY PROPERTY
- PROPOSED NORTHERN EXPANSION
- PROPOSED LANDFILL DEVELOPMENT PHASES

FOR PERMIT PURPOSES ONLY  
NOT FOR CONSTRUCTION

MARK	DATE	DESCRIPTION
	10/15/21	PERMIT
ISSUE:		
PROJECT NO.:	00450-005	
CAD DWG FILE:	00450\005\Emery County 2021.dwg	
DRAWN BY:	JAH	
DESIGNED BY:	BDM	
CHECKED BY:	BDM	
COPYRIGHT:	IGES 2021	

## SHEET TITLE

### EMERY COUNTY LANDFILL GENERAL ARRANGEMENT



DRAFT

REFERENCE:  
 \*ADAPTED FROM USGS TOPO MAP AND DIGITAL ELEVATION MODEL (UTAH AGRC)  
 \*RED POINT, UTAH 1979  
 \*SITE TOPOGRAPHY BY JOHANSEN & TUTTLE, 1994  
 \*UPDATED BASED ON AERIAL IMAGERY, 2010

# EMERY COUNTY

Emery County  
 P.O. Box 889  
 Castle Dale, Utah  
 (435) 381-5450

## CONSULTANTS

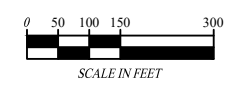
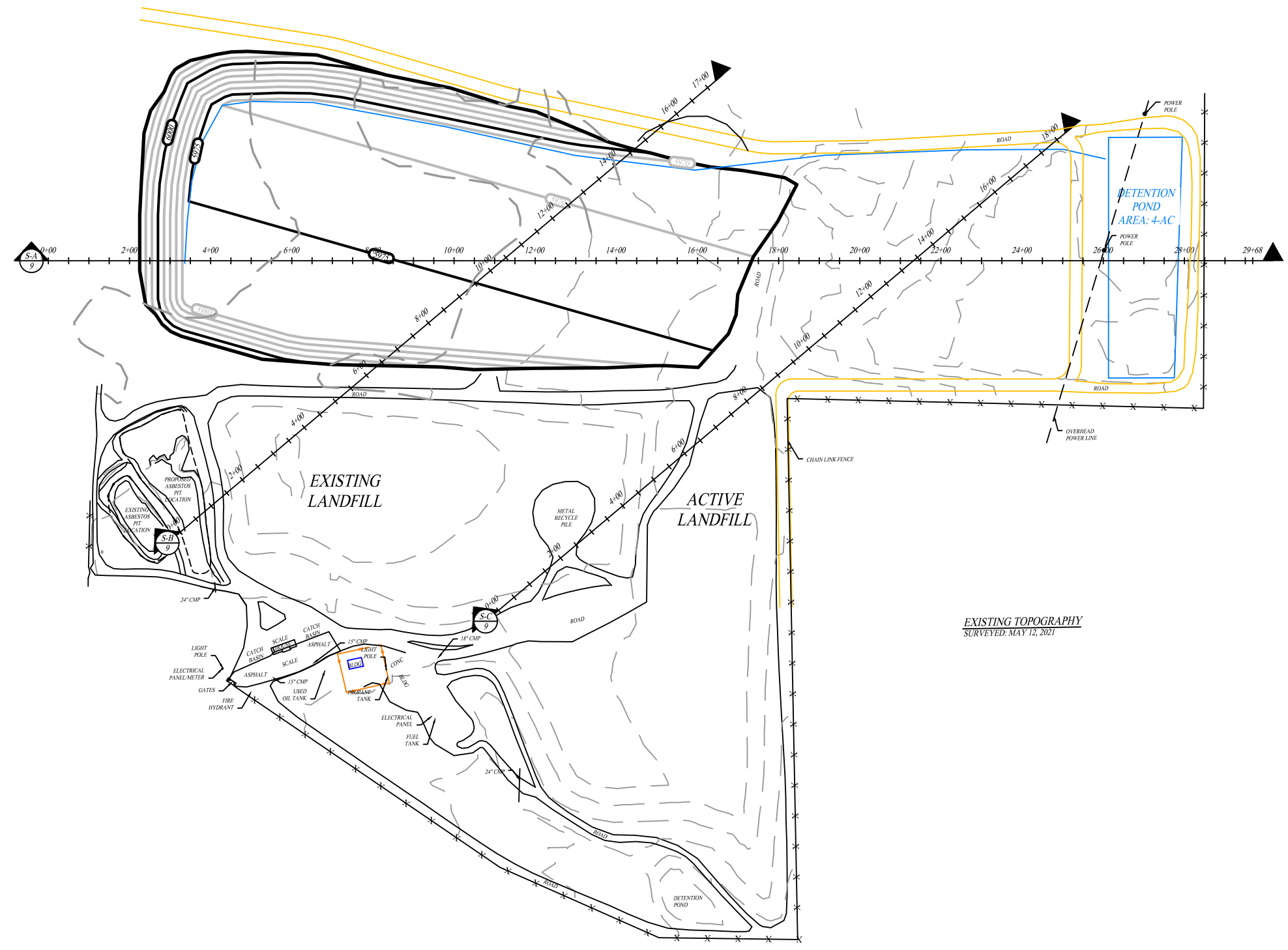


2702 South 1030 West, Suite 10  
 Salt Lake City, Utah 84119  
 (801)270-9400 Fax: (801)270-9401

## NOTES:

- PERIMETER ACCESS ROAD
- EXISTING FENCE
- RUN-OFF CONTROL CHANNEL

FOR PERMIT PURPOSES ONLY  
NOT FOR CONSTRUCTION



REFERENCE:  
 ADAPTED FROM USGS TOPO MAP AND DIGITAL ELEVATION MODEL (UTAH AGRC)  
 "RED POINT, UTAH" 1979  
 SITE TOPOGRAPHY BY JOHANSEN & TUTTLE, 1994  
 UPDATED BASED ON AERIAL IMAGERY, 2010

MARK	DATE	DESCRIPTION
	10/15/21	PERMIT
ISSUE:		
PROJECT NO.:		00450-005
CAD DWG FILE:		00450\005\Emery County 2021.dwg
DRAWN BY:		JAH
DESIGNED BY:		BDM
CHECKED BY:		BDM
COPYRIGHT:		IGES 2021

## SHEET TITLE

# EMERY COUNTY LANDFILL CELL & POND DEVELOPMENT



Emery County  
 P.O. Box 889  
 Castle Dale, Utah  
 (435) 381-5450

### CONSULTANTS

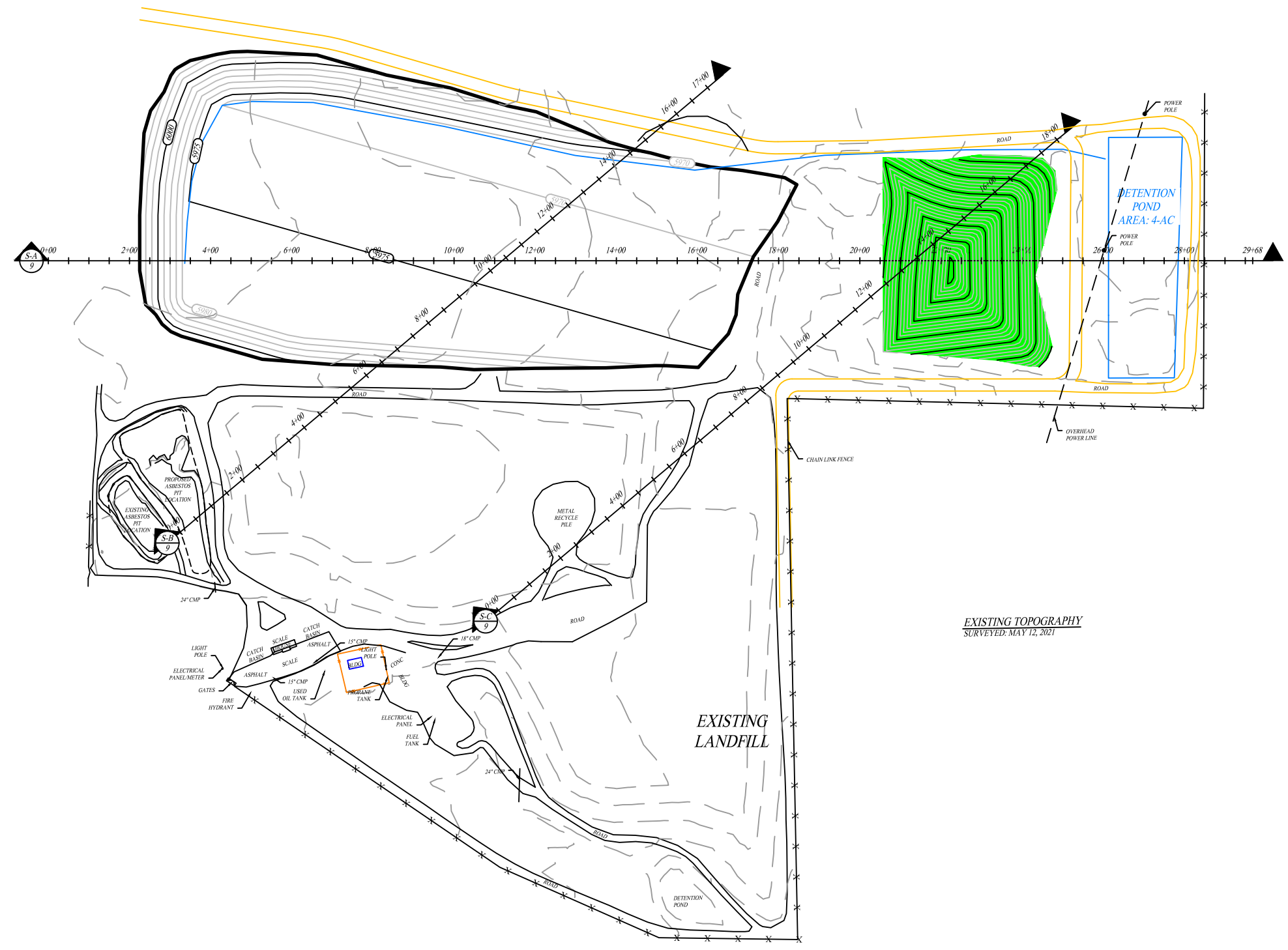


2702 South 1030 West, Suite 10  
 Salt Lake City, Utah 84119  
 (801)270-9400 Fax: (801)270-9401

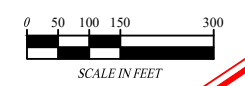
### NOTES:

- PERIMETER ACCESS ROAD
- EXISTING FENCE

FOR PERMIT PURPOSES ONLY NOT FOR CONSTRUCTION



- PHASE I FILL
- PHASE II FILL
- PHASE III FILL
- PHASE IV FILL
- PHASE V FILL



MARK	DATE	DESCRIPTION
	10/15/21	PERMIT
ISSUE:		
PROJECT NO.:		00450-005
CAD DWG FILE:		00450\005\Emery County 2021.dwg
DRAWN BY:		JAH
DESIGNED BY:		BDM
CHECKED BY:		BDM
COPYRIGHT:		IGES 2021

## SHEET TITLE

### EMERY COUNTY LANDFILL

# PHASE I FILL-PLAN

DRAFT

REFERENCE:  
 ADAPTED FROM USGS TOPO MAP AND DIGITAL ELEVATION MODEL (UTAH AGRC)  
 "RED POINT, UTAH" 1979  
 SITE TOPOGRAPHY BY JOHANSEN & TUTTLE, 1994  
 UPDATED BASED ON AERIAL IMAGERY, 2010



# EMERY COUNTY

Emery County  
 P.O. Box 889  
 Castle Dale, Utah  
 (435) 381-5450

## CONSULTANTS

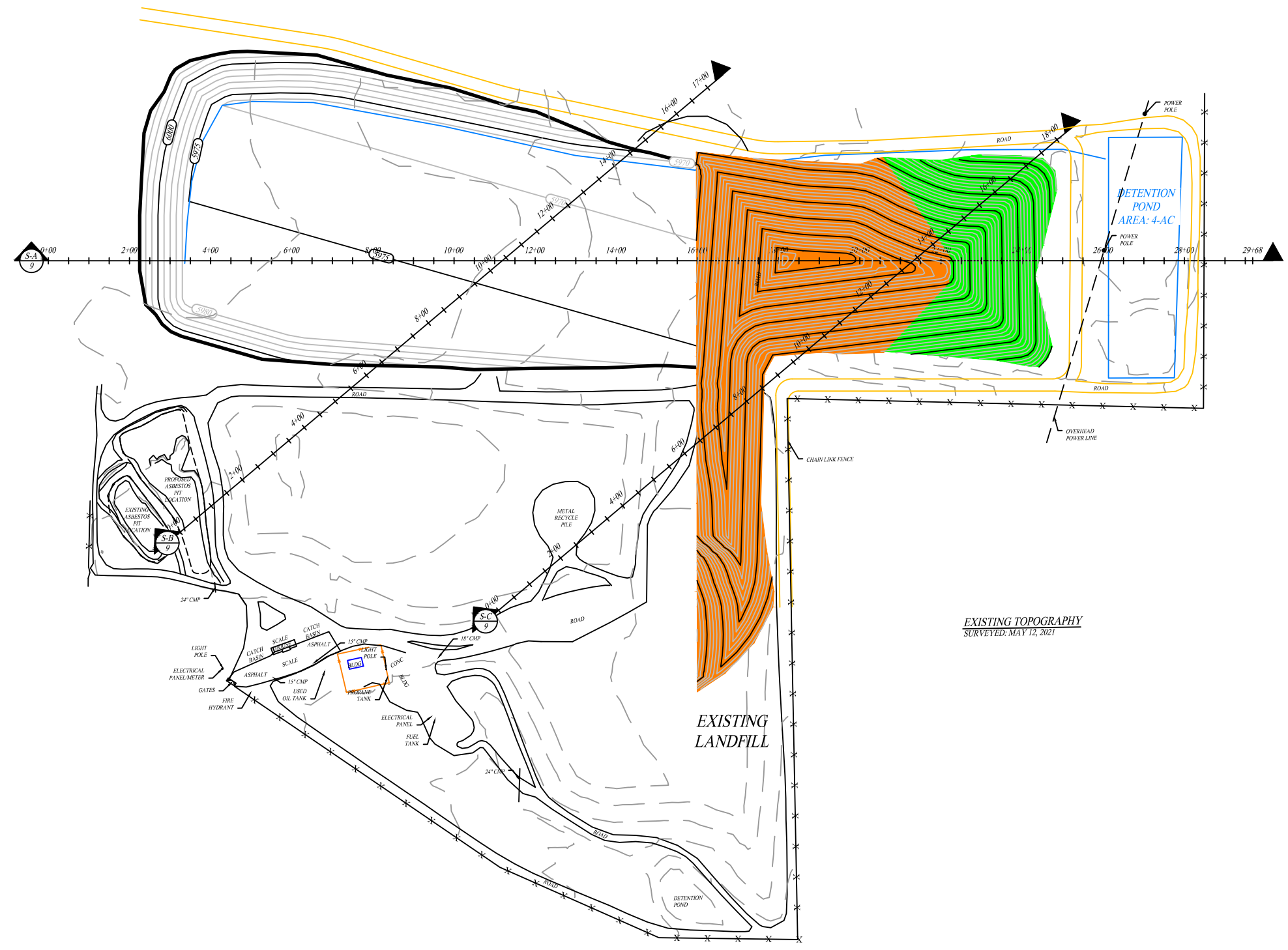


2702 South 1030 West, Suite 10  
 Salt Lake City, Utah 84119  
 (801)270-9400 Fax: (801)270-9401

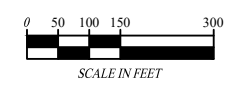
## NOTES:

- PERIMETER ACCESS ROAD
- EXISTING FENCE

FOR PERMIT PURPOSES ONLY NOT FOR CONSTRUCTION



- PHASE I FILL
- PHASE II FILL
- PHASE III FILL
- PHASE IV FILL
- PHASE V FILL



REFERENCE:  
 ADAPTED FROM USGS TOPO MAP AND DIGITAL ELEVATION MODEL (UTAH AGRC)  
 "RED POINT, UTAH" 1979  
 SITE TOPOGRAPHY BY JOHANSEN & TUTTLE, 1994  
 UPDATED BASED ON AERIAL IMAGERY, 2010

MARK	DATE	PERMIT DESCRIPTION
	10/15/21	PERMIT
ISSUE:		
PROJECT NO.:		00450-005
CAD DWG FILE:		00450\005\Emery County 2021.dwg
DRAWN BY:		JAH
DESIGNED BY:		BDM
CHECKED BY:		BDM
COPYRIGHT:		IGES 2021

## SHEET TITLE

### EMERY COUNTY LANDFILL

# PHASE II

# FILL-PLAN

# EMERY COUNTY

Emery County  
P.O. Box 889  
Castle Dale, Utah  
(435) 381-5450

## CONSULTANTS

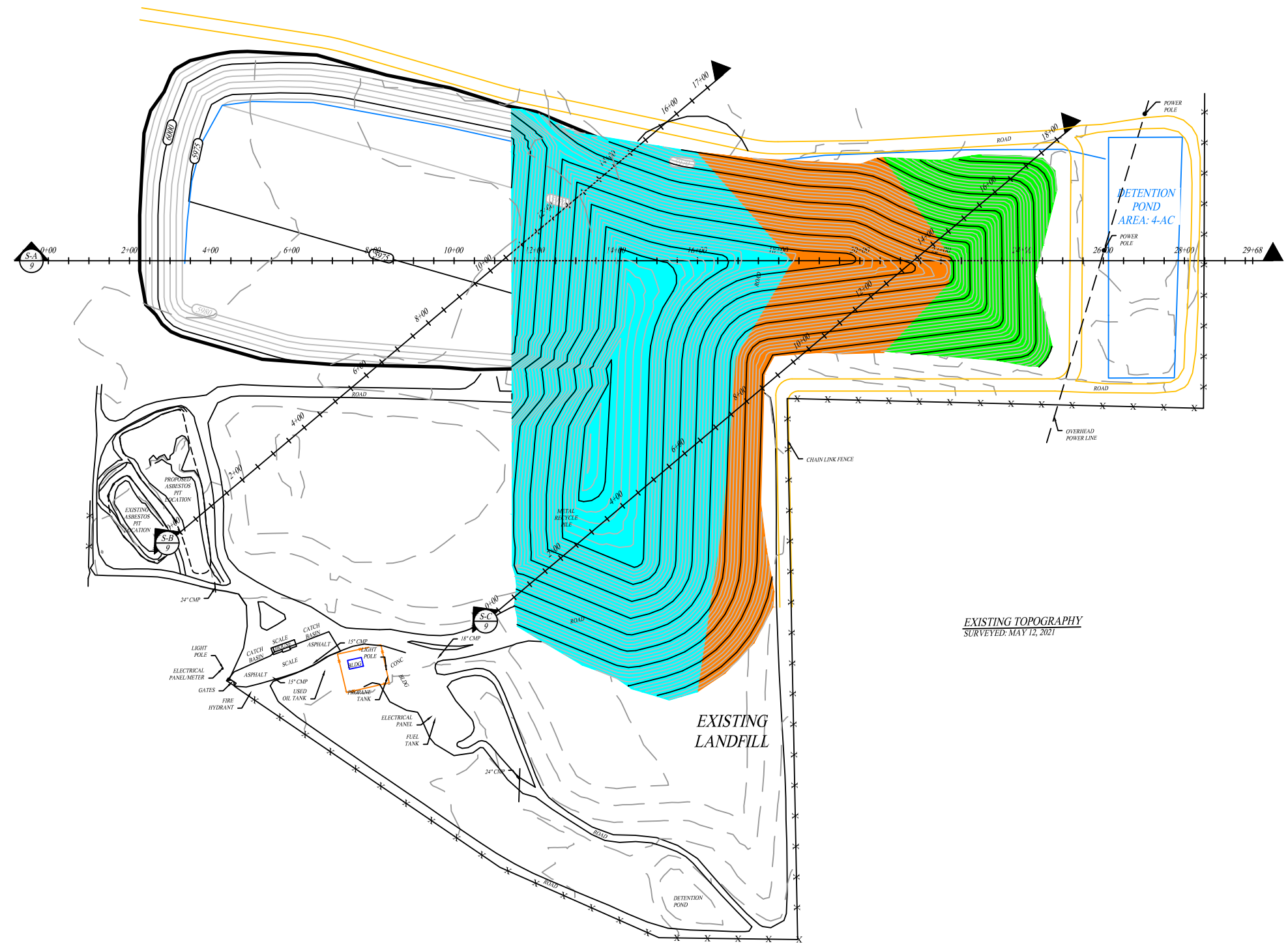


2702 South 1030 West, Suite 10  
Salt Lake City, Utah 84119  
(801)270-9400 Fax: (801)270-9401

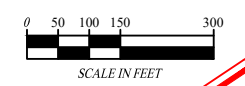
## NOTES:

- PERIMETER ACCESS ROAD
- EXISTING FENCE

FOR PERMIT PURPOSES ONLY NOT FOR CONSTRUCTION



- PHASE I FILL
- PHASE II FILL
- PHASE III FILL
- PHASE IV FILL
- PHASE V FILL



REFERENCE:  
ADAPTED FROM USGS TOPO MAP AND DIGITAL ELEVATION MODEL (UTAH AGRC)  
"RED POINT, UTAH" 1979  
SITE TOPOGRAPHY BY JOHANSEN & TUTTLE, 1994  
UPDATED BASED ON AERIAL IMAGERY, 2010

MARK	DATE	DESCRIPTION
	10/15/21	PERMIT
ISSUE:		
PROJECT NO.:		00450-005
CAD DWG FILE:		00450\005\Emery County 2021.dwg
DRAWN BY:		JAH
DESIGNED BY:		BDM
CHECKED BY:		BDM
COPYRIGHT:		IGES 2021

## SHEET TITLE

### EMERY COUNTY LANDFILL

# PHASE III

# FILL-PLAN

DRAFT

# EMERY COUNTY

Emery County  
 P.O. Box 889  
 Castle Dale, Utah  
 (435) 381-5450

## CONSULTANTS

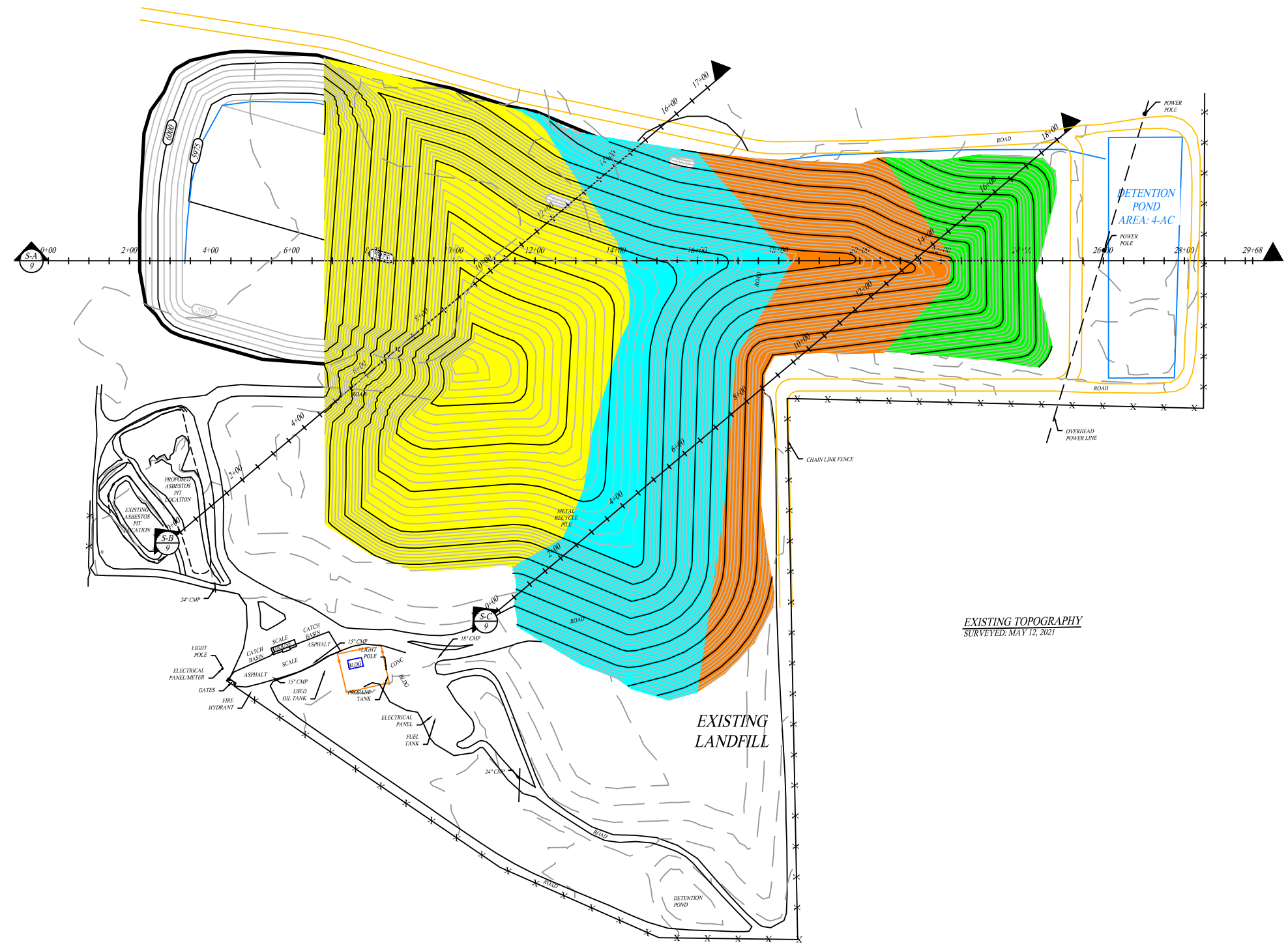


2702 South 1030 West, Suite 10  
 Salt Lake City, Utah 84119  
 (801)270-9400 Fax: (801)270-9401

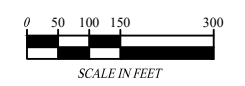
## NOTES:

- PERIMETER ACCESS ROAD
- EXISTING FENCE

FOR PERMIT  
 PURPOSES ONLY  
 NOT FOR  
 CONSTRUCTION



- PHASE I FILL
- PHASE II FILL
- PHASE III FILL
- PHASE IV FILL
- PHASE V FILL



REFERENCE:  
 ADAPTED FROM USGS TOPO MAP AND DIGITAL ELEVATION MODEL (UTAH AGRC)  
 "RED POINT, UTAH" 1979  
 SITE TOPOGRAPHY BY JOHANSEN & TUTTLE, 1994  
 UPDATED BASED ON AERIAL IMAGERY, 2010

MARK	DATE	DESCRIPTION
	10/15/21	PERMIT
ISSUE:		
PROJECT NO.:		00450-005
CAD DWG FILE:		00450\005\Emery County 2021.dwg
DRAWN BY:		JAH
DESIGNED BY:		BDM
CHECKED BY:		BDM
COPYRIGHT:		IGES 2021

## SHEET TITLE

### EMERY COUNTY LANDFILL PHASE IV FILL - PLAN



Emery County  
 P.O. Box 889  
 Castle Dale, Utah  
 (435) 381-5450

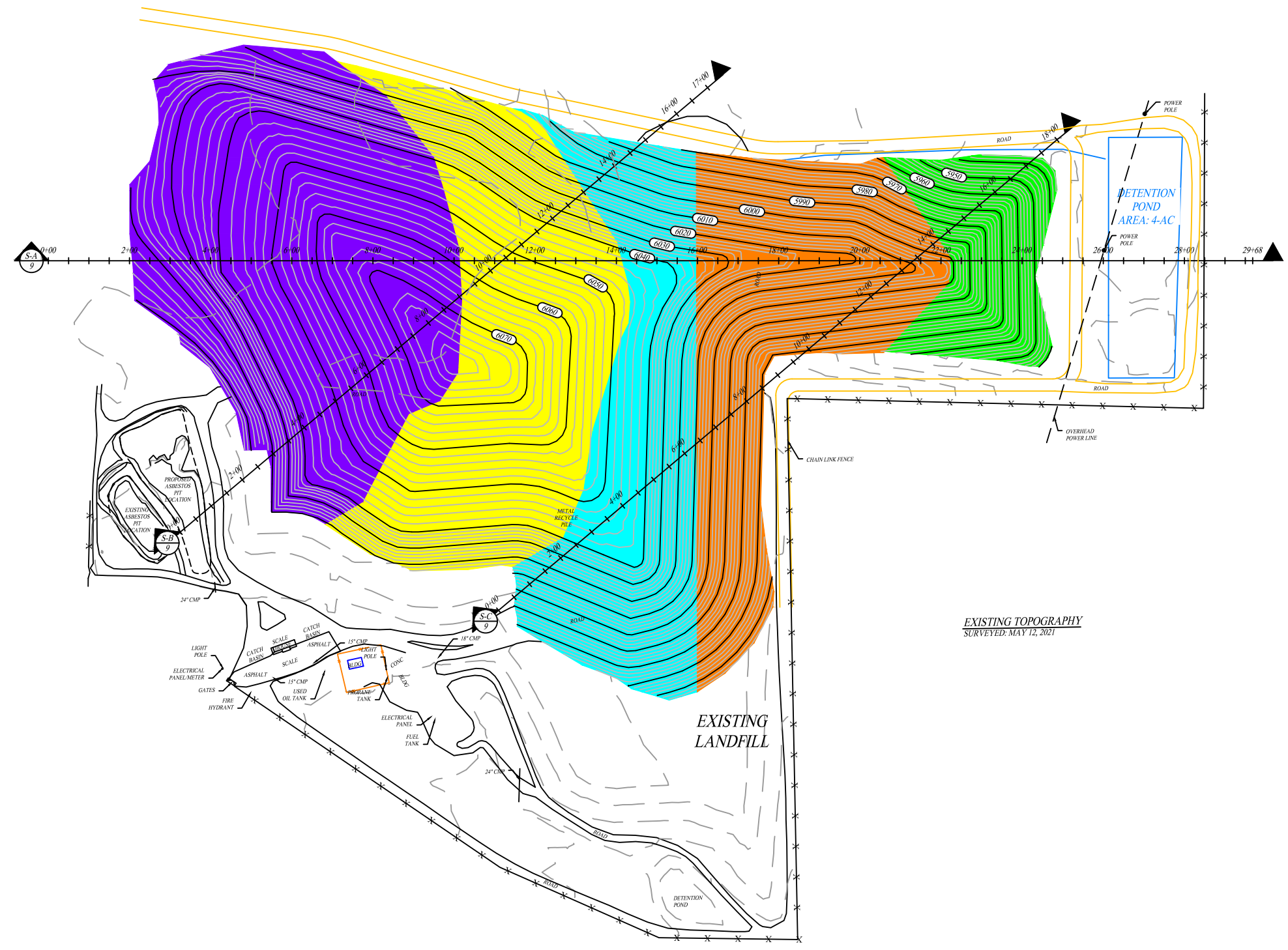
### CONSULTANTS



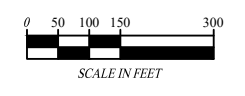
2702 South 1030 West, Suite 10  
 Salt Lake City, Utah 84119  
 (801)270-9400 Fax: (801)270-9401

### NOTES:

- PERIMETER ACCESS ROAD
- EXISTING FENCE
- FOR PERMIT PURPOSES ONLY NOT FOR CONSTRUCTION



- PHASE I FILL
- PHASE II FILL
- PHASE III FILL
- PHASE IV FILL
- PHASE V FILL



REFERENCE:  
 ADAPTED FROM USGS TOPO MAP AND DIGITAL ELEVATION MODEL (UTAH AGRC)  
 "RED POINT, UTAH" 1979  
 SITE TOPOGRAPHY BY JOHANSEN & TUTTLE, 1994  
 UPDATED BASED ON AERIAL IMAGERY, 2010

MARK	DATE	DESCRIPTION
	10/15/21	PERMIT
ISSUE:		
PROJECT NO.:		00450-005
CAD DWG FILE:		00450\005\Emery County 2021.dwg
DRAWN BY:		JAH
DESIGNED BY:		BDM
CHECKED BY:		BDM
COPYRIGHT:		IGES 2021

## SHEET TITLE

### EMERY COUNTY LANDFILL

# PHASE V-FINAL COVER PLAN

Emery County  
P.O. Box 889  
Castle Dale, Utah  
(435) 381-5450

### CONSULTANTS



2702 South 1030 West, Suite 10  
Salt Lake City, Utah 84119  
(801)270-9400 Fax: (801)270-9401

### NOTES:



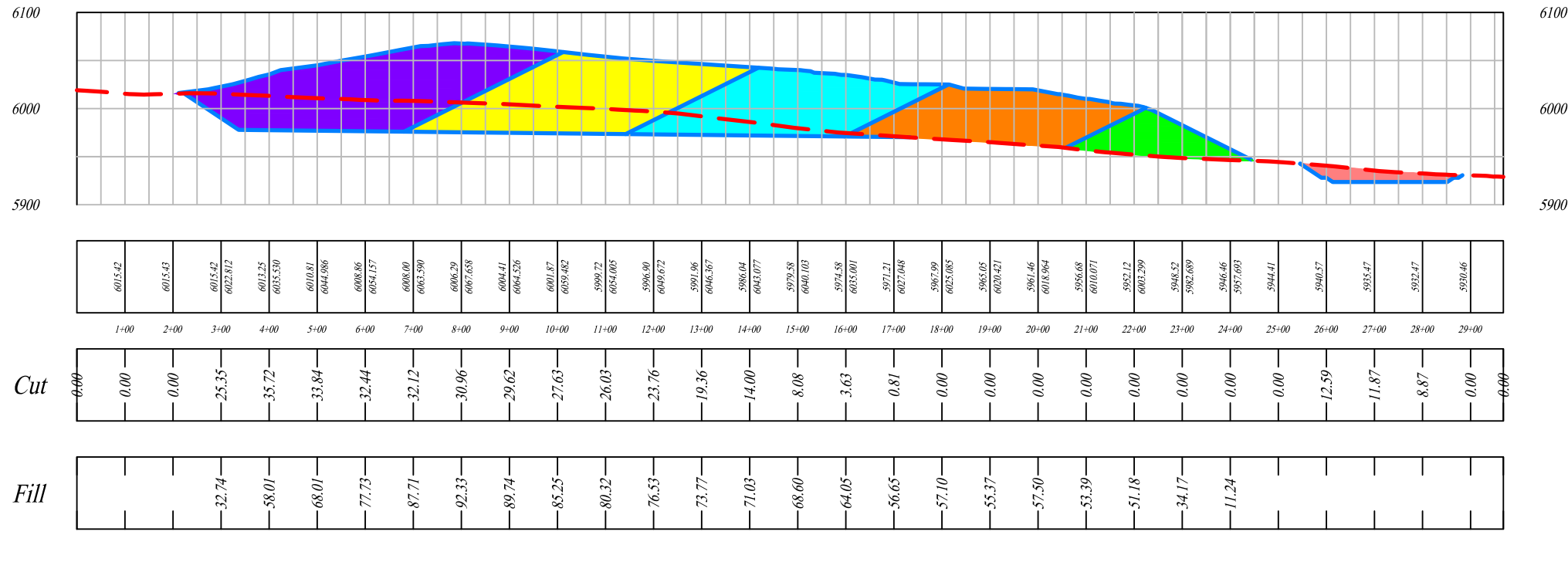
MARK	DATE	DESCRIPTION
	10/15/21	PERMIT

ISSUE:  
PROJECT NO.: 00450-005  
CAD DWG FILE: 00450\005\Emery County 2021.dwg  
DRAWN BY: JAH  
DESIGNED BY: BDM  
CHECKED BY: BDM  
COPYRIGHT: IGES 2021

## SHEET TITLE

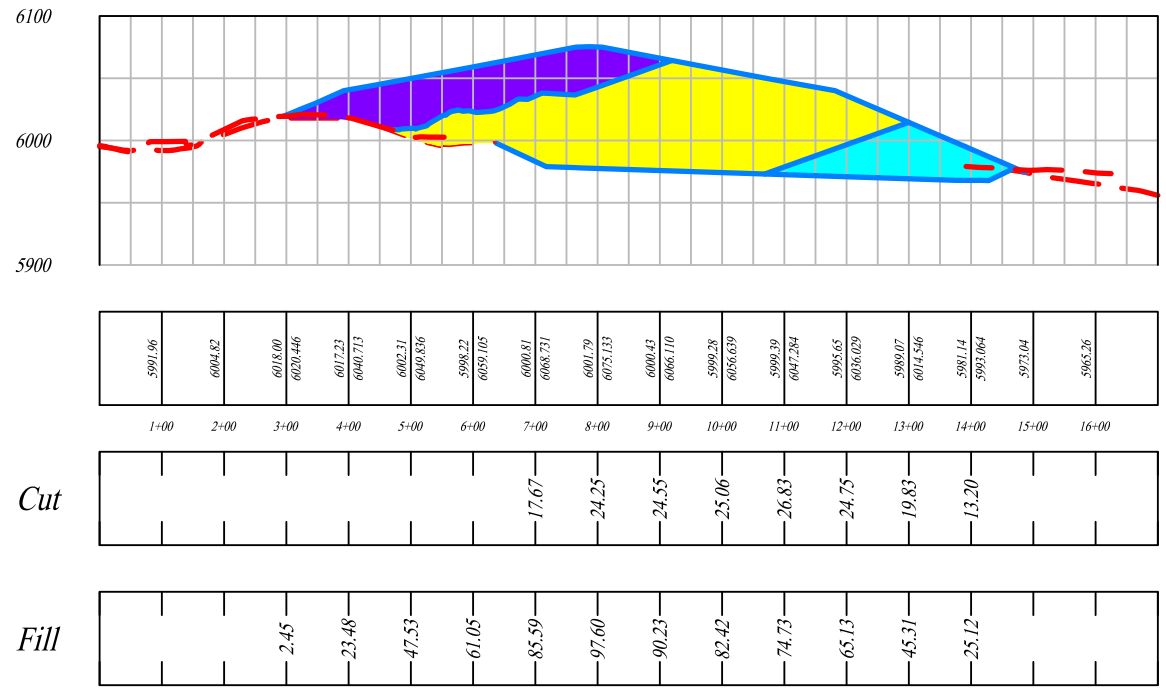
# EMERY COUNTY LANDFILL ELEVATION VIEW

### Section A PROFILE

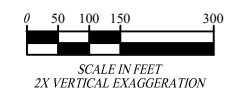
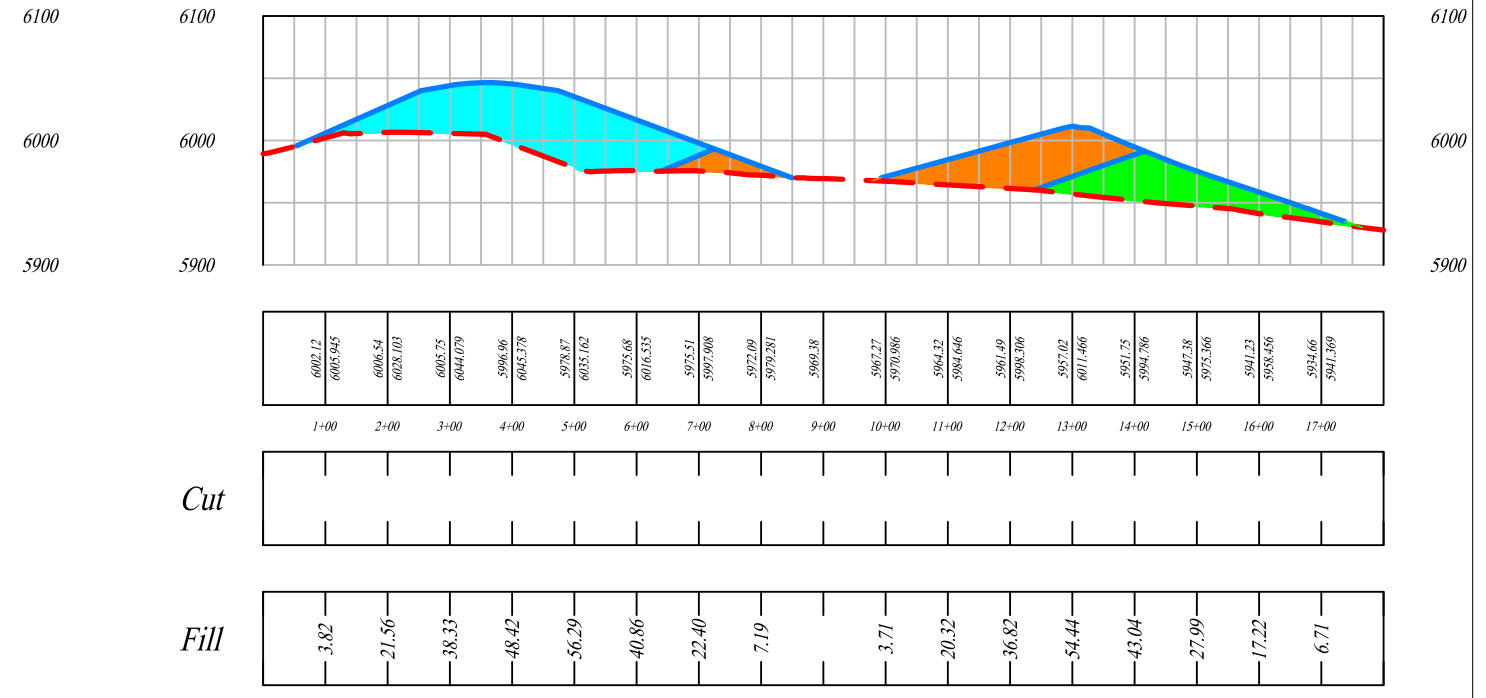


- EXISTING GRADE
- PROPOSED GRADE / PHASE BOUNDARY
- POND CUT
- PHASE I FILL
- PHASE II FILL
- PHASE III FILL
- PHASE IV FILL
- PHASE V FILL

### Section B PROFILE



### Section C PROFILE



REFERENCE:  
ADAPTED FROM USGS TOPO MAP AND DIGITAL ELEVATION MODEL (UTAH AGRC)  
"RED POINT, UTAH" 1979  
SITE TOPOGRAPHY BY JOHANSEN & TUTTLE, 1994  
UPDATED BASED ON AERIAL IMAGERY, 2010



# EMERY COUNTY


Emery County  
P.O. Box 889  
Castle Dale, Utah  
(435) 381-5450

## CONSULTANTS



2702 South 1030 West, Suite 10  
Salt Lake City, Utah 84119  
(801)270-9400 Fax: (801)270-9401

## NOTES:

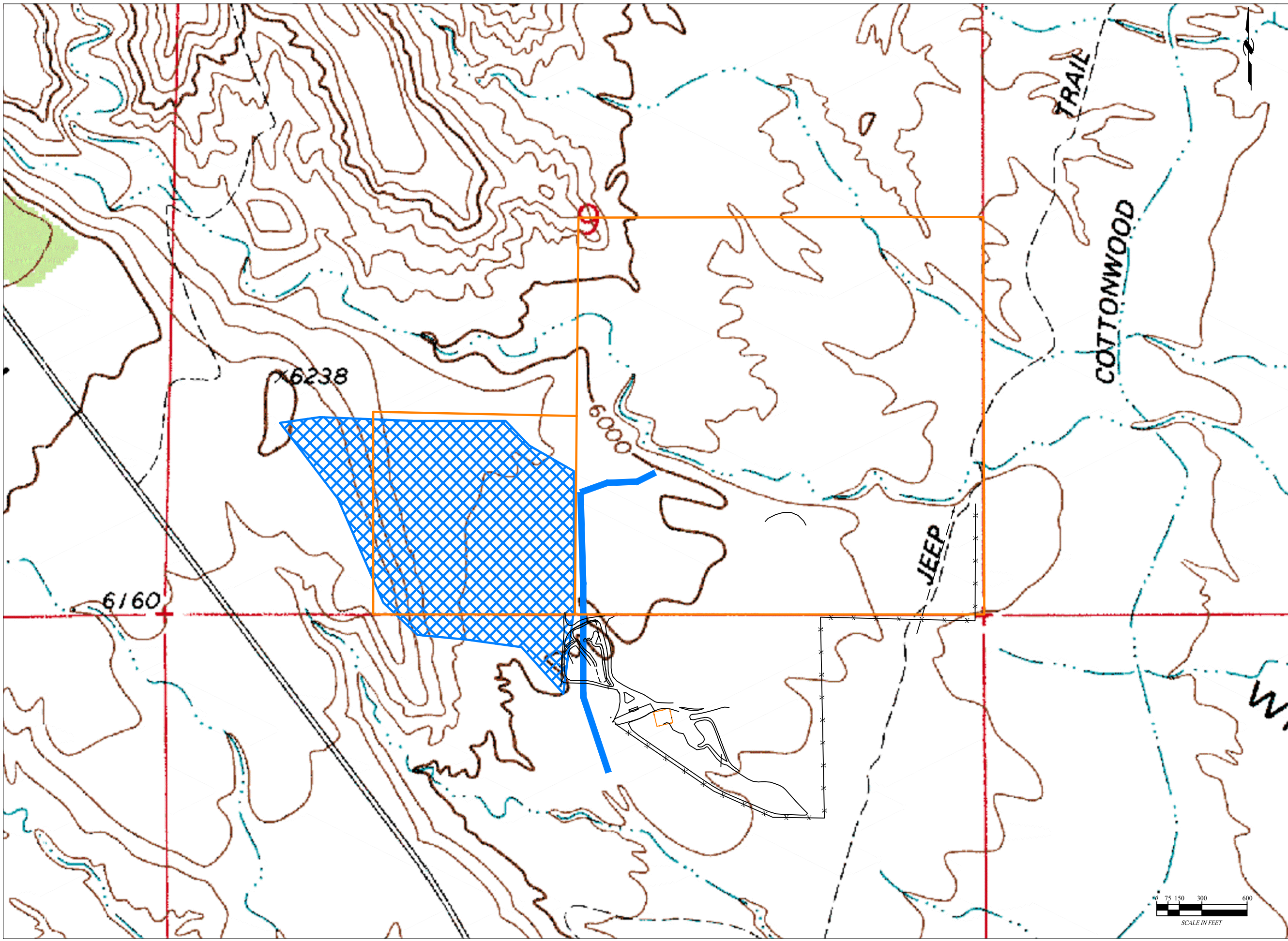
 **POTENTIAL RUN-ON AREA**  
~50 ACRES  
PEAK FLOW: 31.3 CFS  
(25-YR, 24-HR STORM)

FOR PERMIT  
PURPOSES ONLY  
NOT FOR  
CONSTRUCTION

MARK	DATE	DESCRIPTION
	10/15/21	PERMIT

ISSUE:  
PROJECT NO.: 00450-005  
CAD DWG FILE: 00450\005\Emery County 2021.dwg  
DRAWN BY: JAH  
DESIGNED BY: BDM  
CHECKED BY: BDM  
COPYRIGHT: IGES 2021

SHEET TITLE  
EMERY COUNTY LANDFILL  
**RUN-ON  
CONTROL PLAN**



REFERENCE:  
ADAPTED FROM USGS TOPO MAP AND DIGITAL ELEVATION MODEL (UTAH AGRC)  
"RED POINT, UTAH" 1979  
SITE TOPOGRAPHY BY JOHANSEN & TUTTLE, 1994  
UPDATED BASED ON AERIAL IMAGERY, 2010



# EMERY COUNTY

Emery County  
P.O. Box 889  
Castle Dale, Utah  
(435) 381-5450

## CONSULTANTS



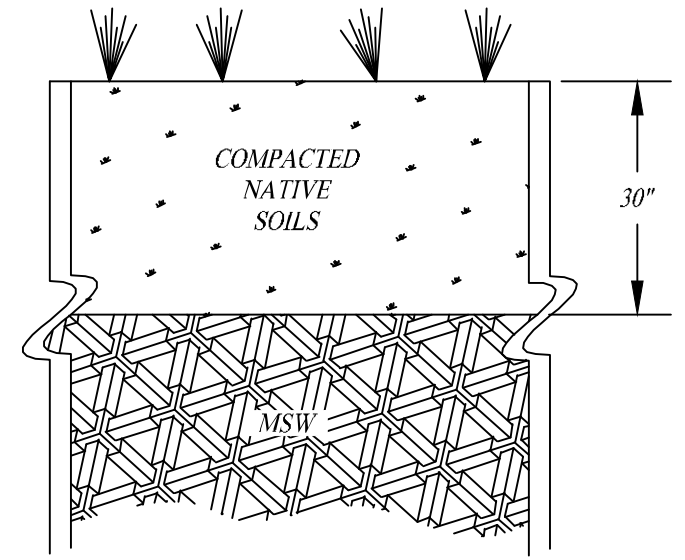
2702 South 1030 West, Suite 10  
Salt Lake City, Utah 84119  
(801)270-9400 Fax: (801)270-9401

## NOTES:

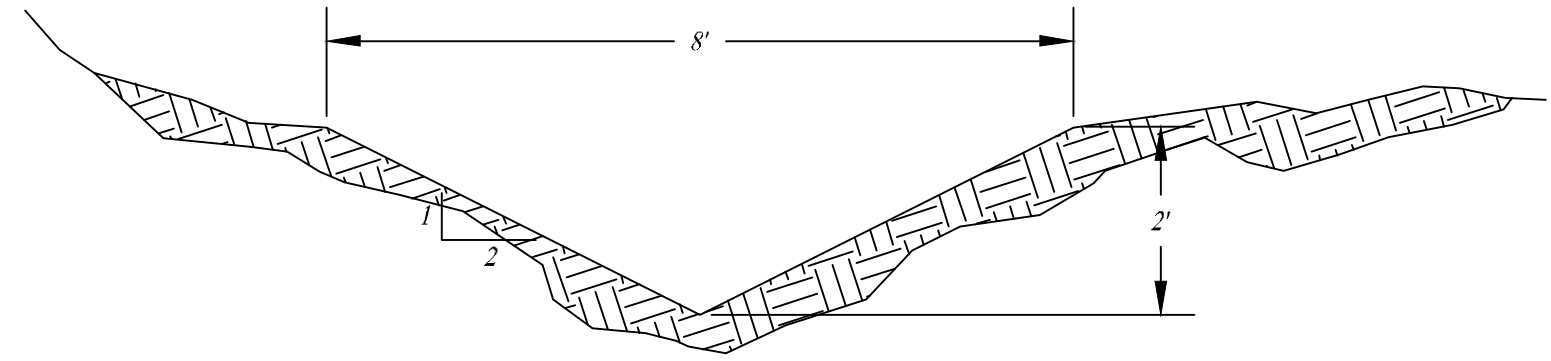
FOR PERMIT  
PURPOSES ONLY  
NOT FOR  
CONSTRUCTION

MARK	DATE	DESCRIPTION
	10/15/21	PERMIT
ISSUE:		
PROJECT NO.:	00450-005	
CAD DWG FILE:	00450\005\Emery County 2021.dwg	
DRAWN BY:	JAH	
DESIGNED BY:	BDM	
CHECKED BY:	BDM	
COPYRIGHT:	IGES 2021	

SHEET TITLE  
**EMERY COUNTY LANDFILL  
LANDFILL  
DETAILS**



**DT-1** DETAIL - FINAL COVER  
- NOT TO SCALE



**DT-2** DETAIL - DRAINAGE DITCH  
- NOT TO SCALE

REFERENCE:  
ADAPTED FROM USGS TOPO MAP AND DIGITAL ELEVATION MODEL (UTAH AGRC)  
"RED POINT, UTAH" 1979  
SITE TOPOGRAPHY BY JOHANSEN & TUTTLE, 1994  
UPDATED BASED ON AERIAL IMAGERY, 2010